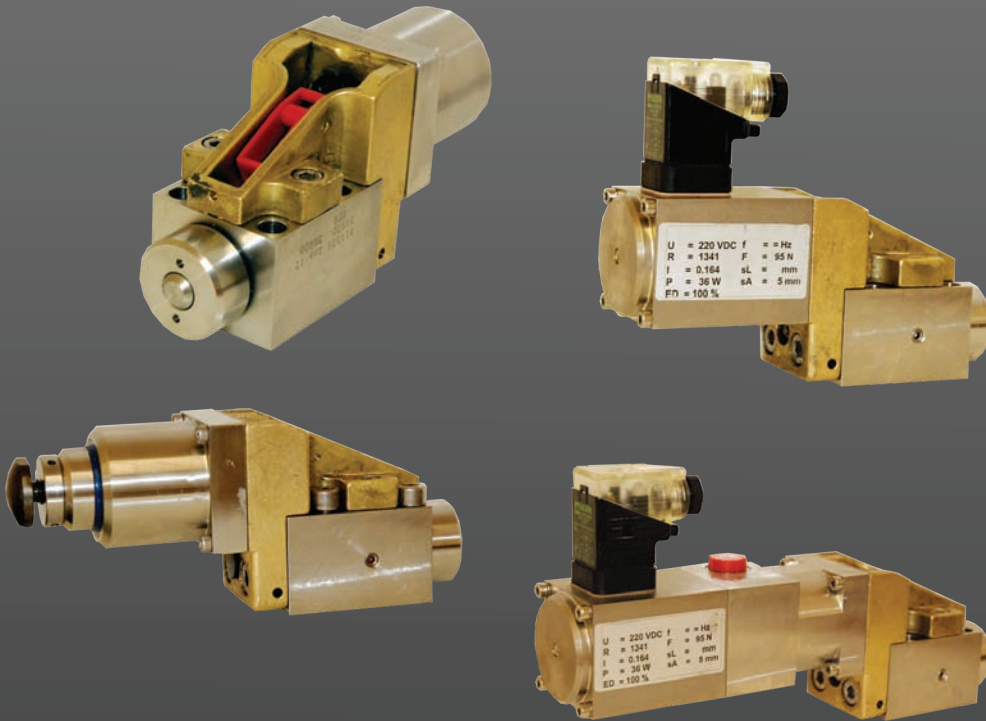


Water Hydraulic Valves



United Kingdom Headquarters
Midland-ACS

Patrick Gregory Road,
Wolverhampton, WV11 3DZ
United Kingdom
Tel: +44 (0)1902 305678
Fax: +44 (0)1902 305676
Email: midland-acs@itt.com

North American Headquarters
Midland-ACS North America

P.O. Box 422, Ontario
L3M 4H8, Canada
Tel: (905) 309-1834
Fax: (905) 309-1835
Mobile: (905) 515-2405
Email: rjthake@aol.com

© 2008 Midland-ACS
A subsidiary of ITT Corporation
Re-issued : 07/2008



www.midland-acs.com

ACCURACY AND COMPLETENESS OF INFORMATION

All information in this literature regarding products and services provided by Midland-ACS is subject to change without prior notice. Reasonable efforts are taken to ensure the accuracy and integrity of all information provided here, but Midland-ACS is not responsible for misprints, out-of-date information, or errors. Midland-ACS makes no warranty, express or implied, or assumes any legal liability or responsibility for the accuracy or completeness of any information contained in this literature.



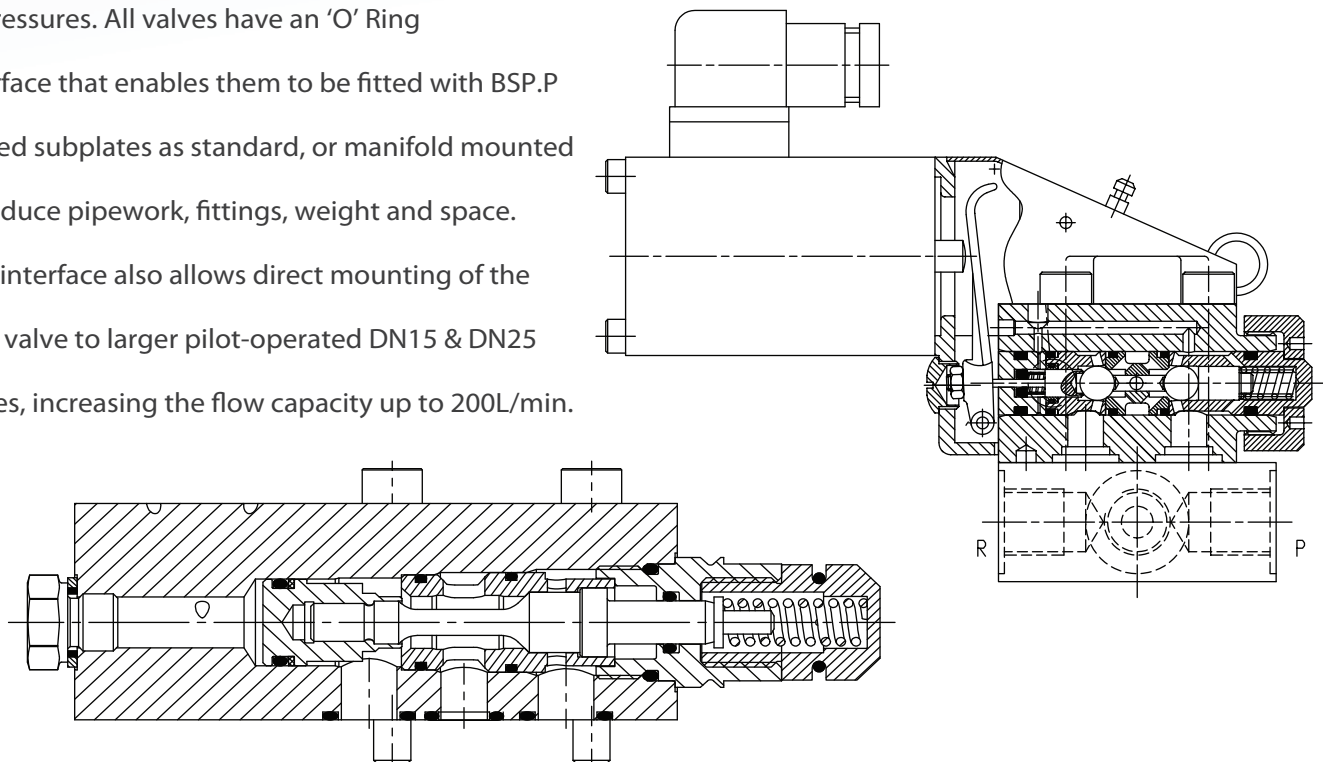
ITT
Engineered for life

General Description

The DN6 size is a ball seated type hydraulic control valve. The stainless steel seat and ceramic ball design ensures a leak tight shut off. The DN6 valve design incorporates a balanced internal piloting system and a lever mechanism to enable low powered operators to switch the valve over a wide of pressures. All valves have an 'O' Ring

interface that enables them to be fitted with BSP.P ported subplates as standard, or manifold mounted to reduce pipework, fittings, weight and space.

This interface also allows direct mounting of the DN6 valve to larger pilot-operated DN15 & DN25 valves, increasing the flow capacity up to 200L/min.



By removing just 4 bolts the valves can be dismantled without disturbing pipework and possibly contaminating the hydraulic system. Blanking or flushing plates can also be supplied.

Materials of construction

- Valve bodies and subplates 316L Stainless Steel
- Wetted parts, various grades of stainless steel/ ceramic/aluminium bronze
- Fasteners, A4, grade 80 stainless steel
- Springs, stainless steel

Filtration

- Recommended 10 micron absolute

Ambient temperature range

- Standard: -20°C to +60°C

Operating pressure range

- Up to 400 bar

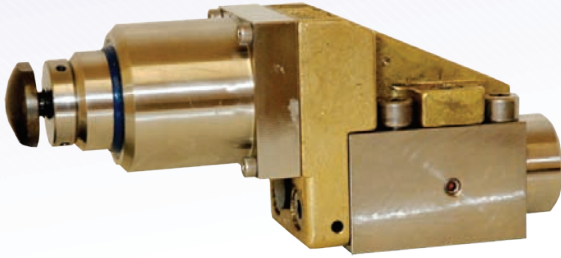
Fluid Media

- Suitable for use with Mineral Oils and Fresh Water

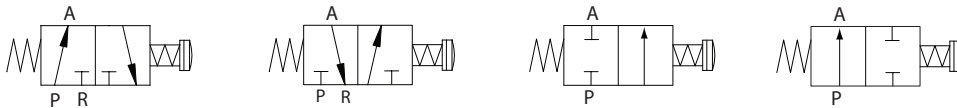
Ingress protection

- IP66/NEMA 4X

Plunger Operated

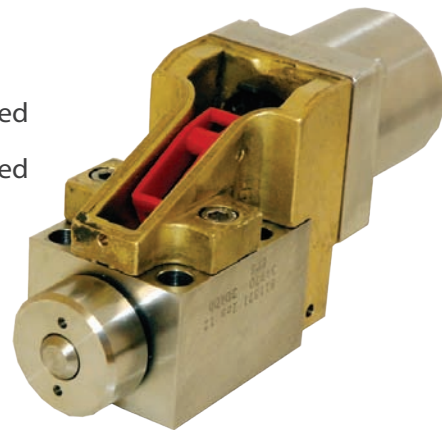


- 2 port, 2 position normally open/normally closed
- 320 bar max working pressure
- Flow rate of 15l/min
- 316 Stainless Steel construction
- Weight - 3.0 Kg

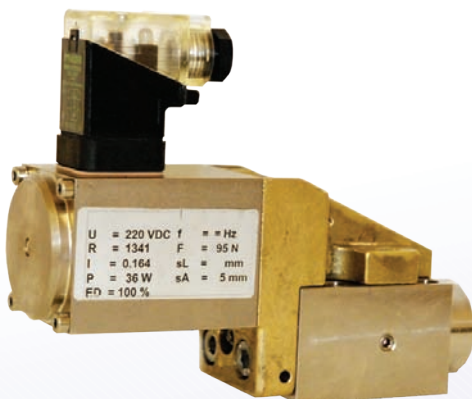


Hydraulic Pilot Operated

- 2 port, 2 position normally open/normally closed
- 3 port, 2 position normally open/normally closed
- 320 bar max working pressure
- Flow rate of 15l/min
- 316 Stainless Steel construction
- Weight - 3.0 Kg

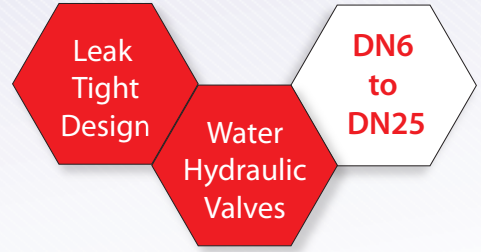


Solenoid Operated

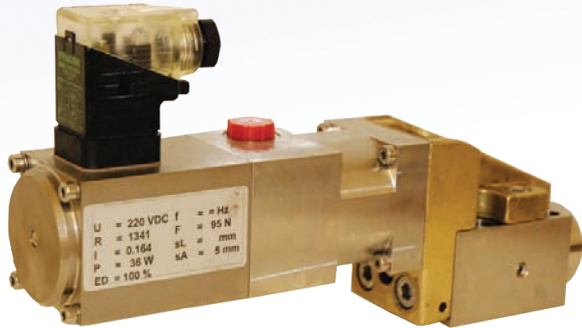


- 3 port, 2 way
- Flow rate of 20l/min
- 15 to 210 bar working pressure
- 316 Stainless Steel construction
- Weight - 3.0 Kg

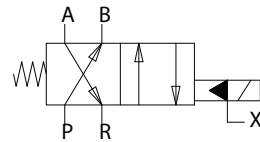
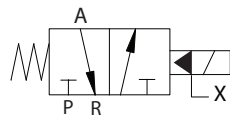




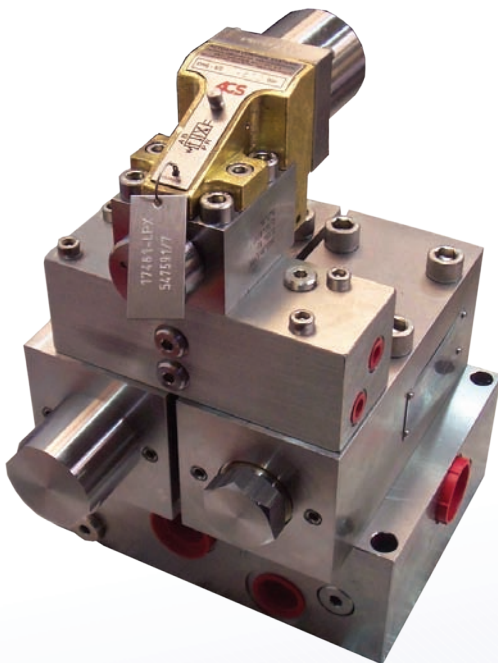
Solenoid Operated with Hydraulic Override Pilot



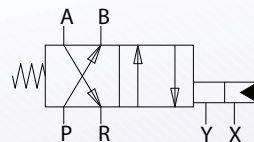
- 3 port, 2 way and 4 port, 2 way
- 210 bar max. pressure
- Flow rate of 15l/min
- 316 Stainless Steel construction
- Nitrile/PTFE seals
- Ports "A", "B", "P" & "R" - 1/2"BSPP
- Port "X" - 1/4"BSPP
- 24VDC, 110VDC, 220VDC



DN25 - Hydraulic Pilot Operated



- 210 bar max. pressure
- Flow rate of 200l/min
- 316 Stainless Steel construction
- Nitrile/PTFE seals
- Ports "A", "B", "P" & "R" - 3/4"BSPP
- Z - Control Pilot - 3/8"BSPP
 - Min pressure 25 bar Max. pressure 320 bar
- X - External Pilot - 1/8"BSPP
- Y - External Pilot Drain - 1/8"BSPP
- Weight - 36Kg



WATER HYDRAULIC VALVES CODING SYSTEM

DN06 - 20l/min DN15 - 100l/min DN25 - 200l/min										Valve Orifice Size & Nominal Flowrates (Water Glycol @ 10 Bar AP)						
4 = 400										Max Operating Pressure (Bar)						
2 3 4										No. of Ports						
2 3 4										No. of Positions						
1 - N/C 2 - N/O 4 - 4/2 spring offset 5 - 4/3 open centre										Function						
A = non block before bleed										Block Before Bleed						
3 = Water										Operating Medium						
1 = Nitrile										Seals						
<p>A = No Operator (Valve Only)</p> <p>B = Industrial Solenoid (DC & AC voltage)</p> <p>N = Low pressure pilot operator hydraulic/gases 2 to 12 bar</p> <p>P = Medium pressure pilot operator hydraulic/gases 25 to 420 bar</p> <p>T = Manual palm & push button</p> <p>V = Roller Operator</p> <p>X = Plunger Operator</p> <p>Z = Special Operator</p>										Operator						
B = 24Vdc D = 110V dc E = 220V dc F = 110V 50 Hz G = 110V 60 Hz K = 240V 50Hz 0 = No Voltage										Voltage						
O = Manual Over-Ride (Spring Return) M = Manual Reset D = Manual Detent A = Autoreset (Spring Return) H = Hydraulic Over-Ride										Additional Features						
0 = Valve only (w/out subplate) 1 = Subplate Mounted 2 = Body Ported										Interface						
0 = valve only 2 = 3/8" 3 = 1/2" 4 = 3/4" 5 = 1"										Port Size						
0 = Valve Only 2 = BSPP 5 = Special										Thread						
0 = No Extras 2 = position indicator proximity sensor 3 = external pilot supply 4 = external pilot drain 5 = hydraulic override										Special Features						
DN06	-	4	3	2	1	A	3	1	B	E	A	1	2	2	0	Example