

TECHNICAL DATA

General Description

A full range of 316 Stainless Steel large flow air service unit for the offshore, food, pharmaceutical and allied industries.

- 316 Stainless Steel throughout.
- Large flow paths minimise pressure drop.
- Clean lines.
- Integral mounting holes.

Operating Medium

Gases, air, inert gas, sweet (natural) and sour gases.

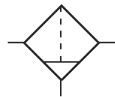
Ingress Protection

Heavy seas/on deck rating

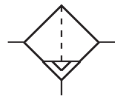
Functional Symbols

Filters

Filter with manual drain

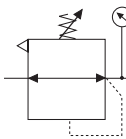


Filter with automatic drain

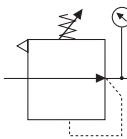


Regulators

Self relieving

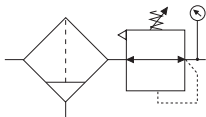


Non relieving

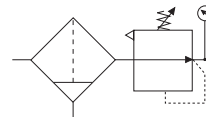


Filter/Regulators

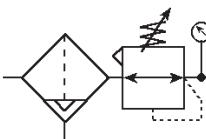
Self relieving with manual drain



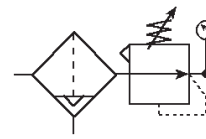
Non relieving with manual drain



Self relieving with automatic drain



Non relieving with automatic drain



Technical Data

Ports NPT (*BSP option available*)

- 3/4", 1"

Gauge ports (*BSP option available*)

- 1/8" NPT
- 1/4" NPT (*option available*)

Relief/Vent Port

- 1/8" NPT (Fitted with bug screen)

Working Temperature

Ambient Temperature

- -20°C to +80°C (-4°F to +176°F)

Filtration

- 5 micron

Working Pressure

Filters and Filter regulators

- Manual drain 20 bar (290 psi)
- Automatic drain 17 bar (247 psi)
- Regulators maximum inlet pressure 20 bar (290 psi)

Bowl Retention

- 260cc (15.87cu ins)

Regulated Pressure

- 0.1 to 2 bar (1.45 to 29 psi)
- 0.2 to 4 bar (2.90 to 58 psi)
- 0.3 to 7 bar (4.35 to 102 psi)
- 0.5 to 10 bar (7.25 to 145 psi)
- 0.8 to 16 bar (11.60 to 232 psi)

Maximum Relief Flow

at 2 bar (29 psi) secondary pressure

- 0.5 cc/sec (0.03cu in/sec)

Flow Capacity

Filter

at 7 bar (102 psi) supply pressure, 0.35 bar (5psi) pressure drop

- 10020 L/min (353 SCFM)

Regulator

at 7 bar (102 psi) inlet pressure, 6 bar (87 psi) secondary pressure, 1 bar (14.5 psi) pressure drop

- 7800 L/min (274 SCFM)

Filter Regulator

at 7 bar (102 psi) inlet pressure, 6 bar (87 psi) secondary pressure, 1 bar (14.5 psi) pressure drop

- 7800 L/min (274 SCFM)

Cv (Kv)

- 3/4" - 7.8 (117)
- 1" - 8.0 (120)

Construction Materials

- Body/Bonnet/Bowl and Internals Stainless Steel AISI 316 S11 to NACE MR-01-75
- Sintered Polypropylene Element
- Nitrile and 316 Stainless Steel Diaphragm
- Inconel X750 Valve Spring
- 316 Stainless Steel Adjustment spring
- Fluoroelastomer Seals and Valve Assembly

Flow Characteristics

Conform to ISO6953-2:2000

For filter pressure drops characteristics see graphs on page 3500.3

For pressure regulator characteristics see graphs on page 3500.4

SELF RELIEVING • NON RELIEVING

General Description

A 316 Stainless Steel combination unit for filtration and pressure regulation of compressed air for the offshore, petrochemical, pharmaceutical and allied industries.

- Large flow paths minimise pressure drop.
- 5 micron element.
- 5 pressure ranges.

Operating Medium, Ingress Protection Functional Symbols, Technical Data and Construction Materials. See details on page 3500.1

Flow Characteristics

- For filter pressure drop characteristics see graphs on page 3500.3
- For pressure regulator characteristics see graphs on page 3500.4



Preferred Models

Model Number	Description	Weight kg (lbs)
Self Relieving		
6FRMSV**2	3/4" NPT Filter with manual drain	5.75 (12.7)
6FRASV**2	3/4" NPT Filter with automatic drain	5.75 (12.7)
8FRMSV**2	1" NPT Filter with manual drain	5.75 (12.7)
8FRMSV**2	1" NPT Filter with automatic drain	5.75 (12.7)

Non Relieving

Specify model code "FRN" in place of "FRM" for manual drain versions.

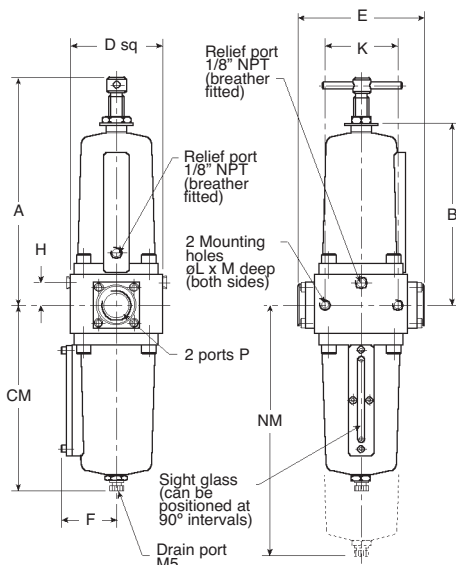
Specify model code "FRB" in place of "FRA" for automatic drain versions.

** For regulated pressure add code:
 0.1 to 2 bar (1.45 to 29 psi) -code 02
 0.2 to 4 bar (2.90 to 58 psi) -code 04
 0.3 to 7 bar (4.35 to 102 psi) -code 07
 0.5 to 10 bar (7.25 to 145 psi) -code 10
 0.8 to 16 bar (11.60 to 232 psi) -code 16
 - For BSP replace '2' in position 9 with '1'
 - For 1/4" gauge port add 'X' to end of model number

INSTALLATION DIMENSIONS mm (inches)

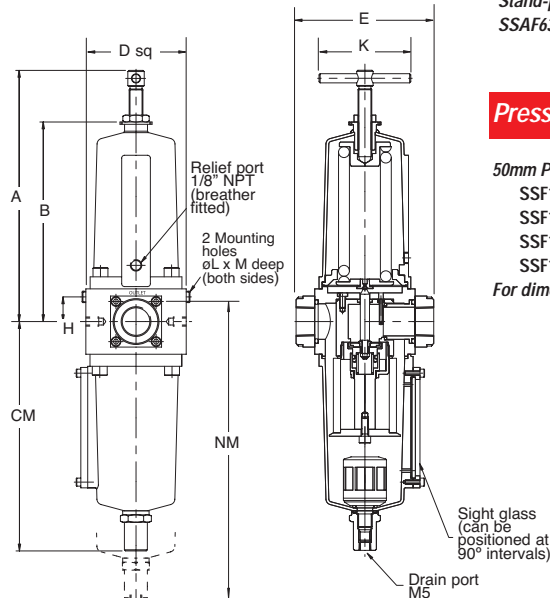
Filter Regulators with Manual Drain

6FRMSV**2, 8FRMSV**2, 6FRNSV**2, 8FRNSV**2



Filter Regulators with Automatic Drain

6FRASV**2, 8FRASV**2, 6FRBSV**2, 8FRBSV**2



Mounting Brackets

Stand-pipe Mounting Kit
SSAF638-28

Pressure Gauge

50mm Pressure gauge - glycerine filled
 SSF153N/11GLY (0 - 11 bar)
 SSF153N/4GLY (0 - 4 bar)
 SSF153N/2GLY (0 - 2 bar)
 SSF153N/16GLY (0 - 16 bar)
 For dimensional details see page 3500.4

Model Number	Ports P	Ports G	A	B	CA†	CM	D	E	F	H	K	L	M	NA†	NM
6FRMSV**2A	3/4" NPT	1/8" NPT	219	174	201	180	87.5	120	52	21.5	70	M8	12	281	260
	3/4" NPT	1/8" NPT	(8.62)	(6.85)	(7.91)	(7.09)	(3.44)	(4.72)	(2.05)	(0.85)	(2.76)	M8	(0.47)	(11.06)	(10.24)
8FRMSV**2A	1" NPT	1/8" NPT	219	174	201	180	87.5	120	52	21.5	70	M8	12	281	260
	1" NPT	1/8" NPT	(8.62)	(6.85)	(7.91)	(7.09)	(3.44)	(4.72)	(2.05)	(0.85)	(2.76)	M8	(0.47)	(11.06)	(10.24)

Dimension NA or NM = clearance required below pipe centreline to enable bowl to be removed.

Dimensions for non relieving models (6FRNSV**2, 8FRNSV**2, 6FRBSV**2 and 8FRBSV**2) are same as self relieving models above.

† = Dimensions CA and NA relate to models with automatic drain (6FRASV**2, 8FRASV**2, 6FRBSV**2 and 8FRBSV**2)

MANUAL DRAIN • AUTOMATIC DRAIN

General Description

316 stainless steel compressed air filters to provide clean dry air for the offshore, petro-chemical and allied industries.

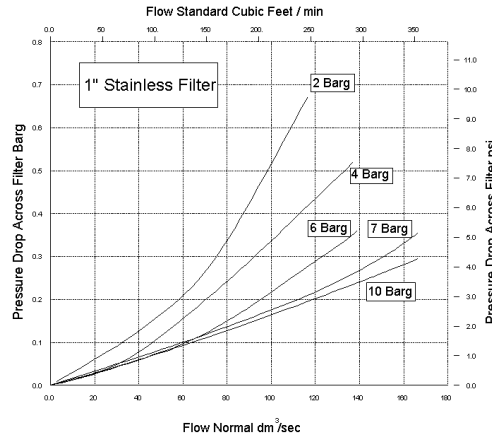
- 5 micron element.
- Manual / auto drain.
- Large flow paths minimise pressure drop.

Functional symbols,

Technical data and

Construction Materials

See details on page 3500.1



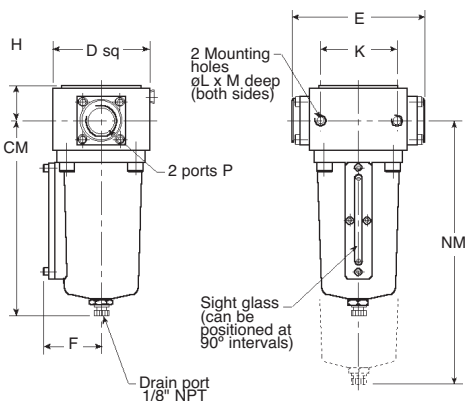
Preferred Models

Model Number	Description	Weight kg (lbs)
6FLMSV202	3/4" NPT Filter with manual drain	3.75 (8.27)
6FLASV172	3/4" NPT Filter with automatic drain	3.75 (8.27)
8FLMSV202	1" NPT Filter with manual drain	3.75 (8.27)
8FLASV172	1" NPT Filter with automatic drain	3.75 (8.27)

INSTALLATION DIMENSIONS mm (inches)

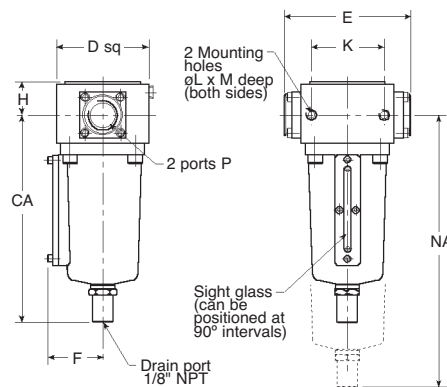
Filters with Manual Drain

6FLMSV202, 8FLMSV202



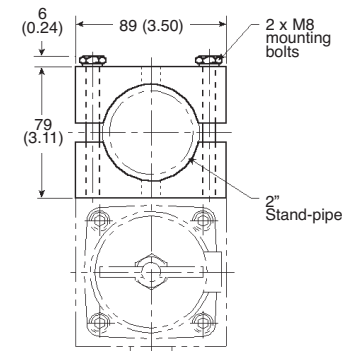
Filters with Automatic Drain

6FLASV172, 8FLASV172



Mounting Brackets

Stand-pipe mounting kit SSAF 638-28



Model Number	Ports P	Ports G	A	B	C	D	E	H	K	L	M	
With manual drain												
6FLMSV202	3/4" NPT	-	180	87.5	120	52	30.5	70	M8	12	-	260
	3/4" NPT	-	(7.09)	(3.44)	(4.72)	(2.05)	(1.20)	(2.76)	M8	(0.47)	-	(10.24)
8FLMSV202	1" NPT	-	180	87.5	120	52	30.5	70	M8	12	-	260
	1" NPT	-	(7.09)	(3.44)	(4.72)	(2.05)	(1.20)	(2.76)	M8	(0.47)	-	(10.24)
With automatic drain												
6FLASV172	3/4" NPT	201	-	87.5	120	52	30.5	70	M8	12	281	-
	3/4" NPT	(7.91)	-	(3.44)	(4.72)	(2.05)	(1.20)	(2.76)	M8	(0.47)	(11.06)	-
8FLASV172	1" NPT	201	-	87.5	120	52	30.5	70	M8	12	281	-
	1" NPT	(7.91)	-	(3.44)	(4.72)	(2.05)	(1.20)	(2.76)	M8	(0.47)	(11.06)	-

SELF RELIEVING • NON RELIEVING

General Description

A 316 Stainless Steel unit for pressure regulation of compressed air in the offshore, petrochemical, and allied industries.

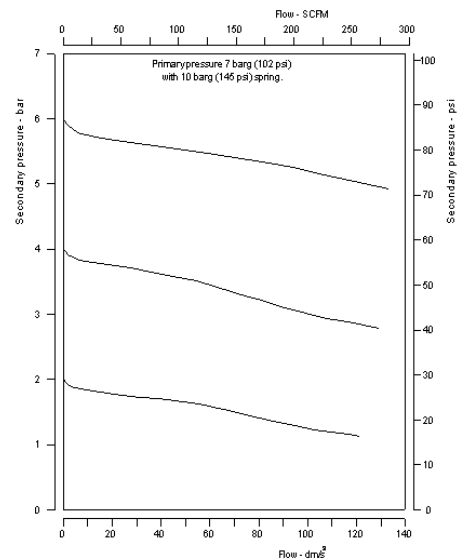
- Large flow
- 4 pressure ranges.
- High relief flow.

** For regulated pressure add code:
 0.1 to 2 bar (1.45 to 29 psi) -code 02
 0.2 to 4 bar (2.90 to 58 psi) -code 04
 0.3 to 7 bar (4.35 to 102 psi) -code 07
 0.5 to 10 bar (7.25 to 145 psi) -code 10
 0.8 to 16 bar (11.60 to 232 psi) -code 16

Operating Medium, Ingress Protection, Functional Symbols, Technical Data and Construction Materials. See details on page 3500.1



Flow Characteristics
 Secondary pressure vs. Flow
 Conforms to ISO6953-2:2000



Preferred Models

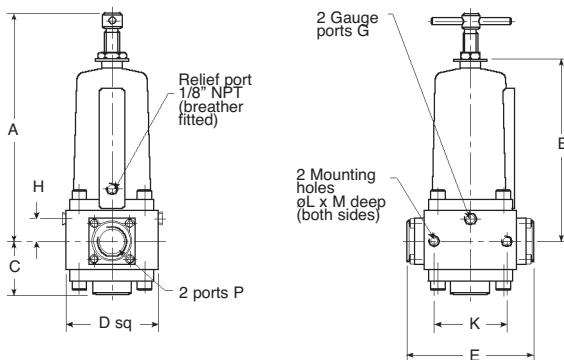
Model Number	Description	Weight kg (lbs)
Self Relieving		
6PRVSV**2A	3/4" NPT Pressure regulator	5.00 (11.0)
8PRVSV**2A	1" NPT Pressure regulator	5.00 (11.0)
Non Relieving		
6PRNSV**2A	3/4" NPT Pressure regulator	5.00 (11.0)
8PRNSV**2A	1" NPT Pressure regulator	5.00 (11.0)

for BSP replace '2' in position 9 with '1'

Models available with ANSI flanges - Contact customer service for further details.

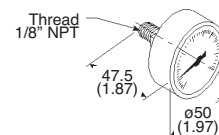
INSTALLATION DIMENSIONS mm (inches)

Pressure Regulators - Self Relieving and Non Relieving



Pressure Gauge

- 50mm pressure gauge - glycerine filled
- SSF153N/11GLY (0-11 bar)
- SSF153N/4GLY (0-4 bar)
- SSF153N/2GLY (0-2 bar)
- SSF153N/16GLY (0-16 bar)



Other ranges of pressure gauge are available - details upon request

Model Number	Ports P	Ports G	A	B	C	D	E	H	K	L	M
6PRVSV**2	3/4" NPT	1/8" NPT	219	174	53	87.5	120	21.5	70	M8	12
	3/4" NPT	1/8" NPT	(8.62)	(6.85)	(2.09)	(3.44)	(3.44)	(0.85)	(2.76)	M8	(0.47)
8PRVSV**2	1" NPT	1/8" NPT	219	174	53	87.5	120	21.5	70	M8	12
	1" NPT	1/8" NPT	(8.62)	(6.85)	(2.09)	(3.44)	(3.44)	(0.85)	(2.76)	M8	(0.47)

Dimensions for non relieving models (6FRNSV**2, 8FRNSV**) are same as self relieving models above.

General Description

316 stainless steel for the offshore, food, pharmaceutical and allied industries.

Provides lubrication of compressed air for use in these industries.

- Accurate drip rate adjustment.
- Can be filled under pressure.
- Transparent sight feed dome gives clear visibility of oil supply.
- Built in flow sensor automatically adjusts lubrication delivery to meet wide air flow demand.

Functional Symbols



Technical data

Ports NPT (*BSP option available*)

- 1/2"

Working temperature

Ambient temperature

- -20°C to +80°C (-4°F to +176°F)

Working pressure

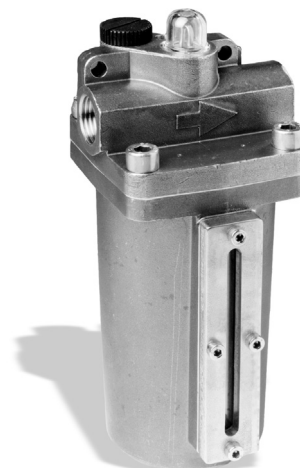
- 17 bar (247 psi)

Capacity

- 380cc (23.2cu in)

Construction Materials

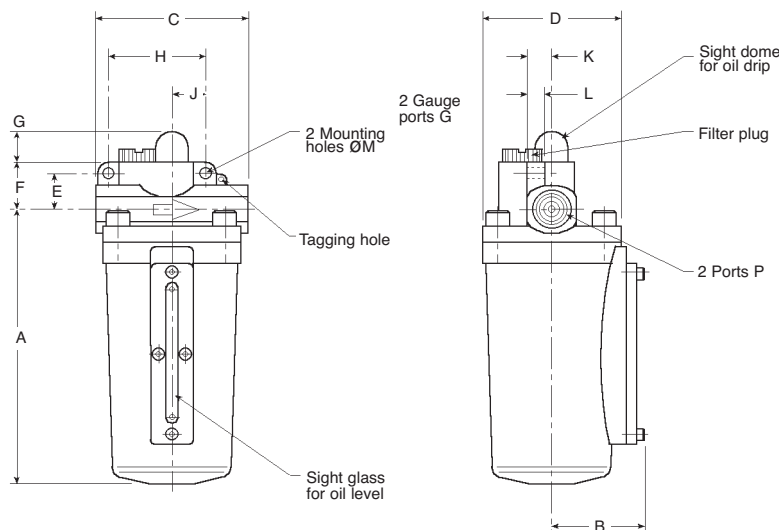
- Body Stainless steel AISI 316
- S11to NACE MR-0175
- Bowl 316 Stainless steel
- Flow and sight glass Acryl
- Seals Nitrile and Fluoroelastomer



Preferred Models		
Model Number	Description	Weight kg (lbs)
Self Relieving		
4LUBSN172	1/2" NPT Lubricator	1.80 (3.97)

INSTALLATION DIMENSIONS mm (inches)

4LUBSN172



Model Number	Ports	P	A	B	C	D	E	F	G	H	J	K	M
4LUBSN172	1/2" NPT	156	52	85	80	20	26	17.5	55	19	14	10	6.5
	1/2" NPT	(6.14)	(2.05)	(3.35)	(3.15)	(0.79)	(1.02)	(6.89)	(2.17)	(0.75)	(0.55)	(0.39)	(0.26)